



arc
cardinal

new
products



2022

CARDINAL EVERYWHERE

Our cover was inspired by our Arc Cardinal products at the finest restaurants, trendiest hotels, and Instagram-worthy cocktail bars!

Each of our collections has been expertly crafted and designed to support the needs of today's chefs, mixologists and sommeliers. This visionary approach to tableware is the founding principle of our culture and brands - Chef & Sommelier®, Arcoroc®, Dudson, Sola, Richardson Sheffield, Chasseur, Thermos®, Alfi® and Abert Buffetware.

We are continuously being inspired by our partners and customers as they transform their tabletops. We know not every establishment has the same budget, customers and operational demands. We set out to serve our customers' needs with solutions. From hotels to healthcare and casual dining to university and colleges, we have you covered.

Our mission is to set new standards of excellence through innovative product design, technological advancement, & extraordinary customer service.

TRUSTED AND TRUE

As part of Arc International, founded in 1825, we will always stay true to our roots of quality, durability, and value. And will always be your first -and most trusted - source for tableware.



Power of Pride

You can trust the pride we take in our product development. Our brands offer timeless, European design principles translated for today's global tables and trends, showing our passion and understanding for the food and beverage service.

Arc Cardinal Brands

Tableware that stands up to the demands of your busy operation.

Corporate Brands



ARCOROC

Partner Brands



Showrooms

Totowa, NJ

New York, NY

Miami, FL

Los Angeles, CA

New Website!
www.ArcCardinal.com

Arc Cardinal Valued Partners



We are proud to support and partner with The USA & Canada delegation of the Association of Maîtres Cuisiniers de France (MCF). MCF accepts only the best French Chefs in the world. Being a Maître Cuisinier (or Master Chef of France) is a prestigious honor that is held in high regard. These chefs are given the highest classification in restaurant guides and are regularly mentioned in top food and travel publications. MCF's motto is, "To preserve and spread the French culinary arts, encourage training in cuisine, and assist in professional development."

We are very pleased to be partnering with such a illustrious organization!



We are so proud to be partners with the United States Bartenders' Guild (USBG). Their mission is to unite the hospitality community to advance professional bartending. The USBG empowers bartenders to take charge of their careers and works to enrich the career advancement of its members through peer-to-peer learning, expert instruction, service projects and competition. We are grateful to be partners with the USBG!

For more information go to www.usbg.org



Slow Food USA®

Arc Cardinal is proud to continue our journey of sustainability by partnering with Slow Food USA to support the Chef's Alliance in the commitment to good, clean, and fair food for all.



DRINKWARE	6
Stemware	
Villeneuve by Chef Daniel Boulud	6
Sequence	8
Tumblers & Barware	
Broadway	14
Essentials	12
Islande	16
Decanters & Carafes	
Fluid Carafes.....	18
Accessories	
Mix Collection	20
S. A. N. Plastic	
Outdoor Perfect Stackable	24
DINNERWARE	26
Dudson Dinnerware	
Harvest	26
Organic White	30
Chef & Sommelier® Dinnerware	
Eternity Plus	32
Arcoroc® Dinnerware	
Opal Dinnerware	36
FLATWARE	40
Chef & Sommelier® Flatware	
Black Oak Satin 18/10	40
Sola Flatware	
Eve 18/10	40
Luxus Sand 18/10	41
Miracle 18/10	41
Steak Knives	42
SMALLWARES/BUFFETWARE	44
Display/Risers	
Abert	
Domino	44
Cosmo	50
On Stage	53
Mix & Play	52
Arcoroc® Dinnerware	
Ontouse	44
Cookware/Serveware	
Chasseur	
Round & Oval Casserole	54
Arcoroc® Dinnerware	
Trivets	55
Cutlery	
Richardson Sheffield Professional Cutlery	
Universal	56

C&S
Chef & Sommelier
- FRANCE -

VILLENEUVE BY DANIEL BOULUD



Meticulously crafted by Daniel Boulud, each glass allows for the true appreciation of the wine, capturing the story of each varietal that is being tasted. This collection seamlessly transitions from fine dining to bistro.

NEW

VILLENEUVE BY DANIEL BOULUD

* EFFERVESCENCE PLUS

C&S
Chef & Sommelier
- FRANCE -



FN159
Sweet Wine (9 Oz.)
H: 7 15/16" T: 3"
B: 3 3/8" M: 3 5/16"
1 Dz.



FN166
Universal Wine (16 Oz.)
H: 8 15/16" T: 2 7/16"
B: 3 1/4" M: 3 1/2"
1 Dz.



FN161
Universal Wine (18 Oz.)
H: 9 3/4" T: 2 1/2"
B: 3 1/2" M: 3 1/2"
1 Dz.



FN160
Burgundy (21 1/2 Oz.)
H: 8 15/16" T: 2 13/16"
B: 3 1/2" M: 4 1/8"
1 Dz.



FN162
Bordeaux (24 1/2 Oz.)
H: 10 1/8" T: 2 7/8"
B: 3 1/2" M: 4"
1 Dz.



Q1151
Exaltation Specialty Flute (10 1/4 Oz.)
H: 8 5/16" T: 2 5/16"
B: 2 7/8" M: 3 1/16"
2 Dz.

*

TECHNOLOGY & MATERIAL



★
★
★
★
★
STEMWARE



The Glassware Sequence Of The Future. The perfect design progression, bringing a modern update to a classical shape with the essence of crafted crystal. Made with our high-performance lead-free crystal material, Krysta®.



N9696
 Port (7 Oz.)
 H: 7 1/2" T: 1 3/4"
 B: 2 5/8" M: 2 1/2"
 2 Dz.



L5635
 Universal (13 Oz.)
 H: 8 1/4" T: 2 1/4"
 B: 3" M: 3 1/8"
 1 Dz.



L5633
 Universal (16 Oz.)
 H: 9" T: 2 7/16"
 B: 3 1/4" M: 3 7/16"
 1 Dz.

NEW



9 oz.
 6 oz.

Q1069
 Corkscrew Universal
 (16 Oz.)
 H: 9" T: 2 3/8"
 B: 3 1/4" M: 3 5/16"
 1 Dz.
 6 OZ. Bottom of Corkscrew
 9 OZ. Top of Corkscrew
 Approximate Pour Lines



L5638
 Universal (19 1/2 Oz.)
 H: 9 1/4" T: 2 5/8"
 B: 3 1/2" M: 3 3/8"
 1 Dz.



L5636
 Burgundy (20 1/2 Oz.)
 H: 8" T: 2 5/8"
 B: 3 3/8" M: 3 7/8"
 1 Dz.



N9710
 Bordeaux (21 Oz.)
 H: 9 1/4" T: 2 3/4"
 B: 3 1/2" M: 3 3/4"
 2 Dz.



L5637
 Bordeaux (26 Oz.)
 H: 9 3/8" T: 2 5/8"
 B: 3 3/8" M: 3 1/2"
 1 Dz.

★
 ★
 ★
 ★
 ★
 ★
 S T E M W A R E

T E C H N O L O G Y & M A T E R I A L



SEQUENCE



Brilliant and resilient, Sequence delivers an authentic yet elevated craft cocktail experience.



*

L5640
 Flute (6 Oz.)
 H: 8 1/4" T: 1 7/8"
 B: 2 3/4" M: 2 1/4"
 1 Dz.

NEW



Q3702
 Nick and Nora Cocktail (5 1/4 Oz.)
 H: 5 5/8" T: 2 3/4"
 B: 2 3/8" M: 2 3/4"
 2 Dz.



L5641
 Coupe Cocktail (7 3/4 Oz.)
 H: 5 7/8" T: 4 3/8"
 B: 3" M: 4 3/8"
 1 Dz.

TECHNOLOGY & MATERIAL





L5642
 All Purpose (14 Oz.)
 H: 6 9/16" T: 2 1/2"
 B: 3" M: 3 1/8"
 1 Dz.



N9711
 Iced Tea (16 Oz.)
 H: 7 1/4" T: 2 3/4"
 B: 3" M: 3 3/8"
 2 Dz.



P0089
 Belgian Beer (12 1/2 Oz.)
 H: 5 7/8" T: 2 1/2"
 B: 2 7/8" M: 3 1/4"
 2 Dz.



L5757
 Rocks (8 1/2 Oz.)
 H: 3 1/4" T: 2 3/4"
 B: 2 1/8" M: 3 1/8"
 1 Dz.



L5758
 Rocks (10 1/2 Oz.)
 H: 3 1/2" T: 3"
 B: 2 1/4" M: 3 3/8"
 1 Dz.



L5756
 Double Old Fashioned (13 1/2 Oz.)
 H: 3 5/8" T: 3"
 B: 2 3/8" M: 3 3/8"
 1 Dz.



L5754
 Hi Ball (11 1/2 Oz.)
 H: 5 3/4" T: 2 1/8"
 B: 2" M: 2 3/8"
 1 Dz.



L5755
 Cooler (16 Oz.)
 H: 6 3/8" T: 2 1/2"
 B: 2 1/2" M: 3"
 1 Dz.

TECHNOLOGY & MATERIAL



★ ★ ★ ★ ★
 STEMWARE

ARCOROC ESSENTIALS



A sleek and sophisticated barware line that features a slimming perspective and thin base.



J4764
Rocks (7 1/2 Oz.)
H: 2 3/4" T: 3 1/4"
B: 2 7/8" M: 3 1/4"
6 Pcs.



15012
Hi Ball (10 1/2 Oz.)
H: 6 1/2" T: 2 3/8"
B: 2 1/8" M: 2 1/4"
2 Dz.

NEW



Q1774
Collins (13 Oz.)
H: 6 1/8" T: 2 3/4"
B: 2 1/4" M: 2 3/4"
1 Dz.



J3510
Rocks (12 1/2 Oz.)
H: 3 1/2" T: 3 1/4"
B: 2 7/8" M: 3 1/4"
6 Pcs.



N8981*
Blue Rocks (12 1/2 Oz.)
H: 3 1/2" T: 3 1/4"
B: 2 7/8" M: 3 1/4"
6 Pcs.



N8901*
Grey Rocks (12 1/2 Oz.)
H: 3 1/2" T: 3 1/4"
B: 2 7/8" M: 3 1/4"
6 Pcs.



L6500
Beverage (17 Oz.)
H: 4 7/8" T: 3 1/2"
B: 2 3/4" M: 3 5/8"
2 Dz.



N8982*
Blue Beverage (17 Oz.)
H: 4 7/8" T: 3 1/2"
B: 2 3/4" M: 3 5/8"
6 Pcs.



N9029*
Grey Beverage (17 Oz.)
H: 4 7/8" T: 3 1/2"
B: 2 3/4" M: 3 5/8"
6 Pcs.

NEW



Q6480
Cooler (20 3/4 Oz.)
H: 5 3/4" T: 3 1/4"
B: 3 1/4" M: 3 1/4"
1 Dz.

TECHNOLOGY & MATERIAL



*Color is applied via spray, sprayed glassware can last up to 1,000 washes.

TUMBLERS & BARWARE

ARCOROC BROADWAY



Strikingly beautiful cut glass adds stylish sophistication to your beverage service with a vintage touch.



L7253
Shot (2 Oz.)
H: 2 3/8" T: 1 7/8"
B: 1 1/8" M: 1 7/8"
2 Dz.



L7254
Rocks (10 1/2 Oz.)
H: 3 1/2" T: 3 3/8"
B: 3" M: 3 3/8"
2 Dz.



Q7932
Vintage Cocktail (8 1/4 Oz.)
H: 7 1/2" T: 3 1/2"
B: 2 9/16" M: 3 1/2"
2 Dz.
Available Q3



P8795
Cocktail (7 Oz.)
H: 6 1/8" T: 4 1/2"
B: 3" M: 4 1/2"
1 Dz.



P8796
Coupe Cocktail (8 Oz.)
H: 5 1/2" T: 4 1/2"
B: 3" M: 4 1/2"
1 Dz.



P8821
Gin Cocktail (19 1/2 Oz.)
H: 7 1/2" T: 4 1/4"
B: 3 1/4" M: 4 1/4"
1 Dz.



L7256
Hi Ball (9 1/4 Oz.)
H: 5 1/4" T: 2 3/8"
B: 2 1/4" M: 2 3/8"
2 Dz.



L7255
Hi Ball (12 Oz.)
H: 5 3/4" T: 3"
B: 2 1/2" M: 3"
2 Dz.



P1470
Beverage (15 Oz.)
H: 6 1/2" T: 3 1/8"
B: 2 3/4" M: 3 1/8"
2 Dz.

NEW

NEW

NEW

NEW

NEW



ARCOROC ISLANDE



Islande's timeless design with straight sides and heavy shams is a barware essential.



40375
Cordial (2 ¼ Oz.)
H: 4 ½" T: 1 ½"
B: 1 ¾" M: 1 ½"
6 Dz.



J4238
Whiskey (3 ¼ Oz.)
H: 3 ⅞" T: 2"
B: 1 ⅞" M: 2"
2 Dz.



N6643
Juice (5 ¼ Oz.)
H: 4" T: 2 ½"
B: 2" M: 2 ½"
2 Dz.



J4241
Old Fashioned (7 Oz.)
H: 3 ¼" T: 2 ¾"
B: 2 ⅝" M: 2 ¾"
2 Dz.



12652
Old Fashioned (8 ½ Oz.)
H: 3 ⅞" T: 3 ⅞"
B: 3" M: 3 ⅞"
4 Dz.



J4239
Old Fashioned (10 Oz.)
H: 3 ⅞" T: 3 ⅞"
B: 3" M: 3 ⅞"
2 Dz.



N6640
Hi Ball (10 Oz.)
H: 5 ⅝" T: 2 ½"
B: 2 ¼" M: 2 ½"
2 Dz.



N6377
Double Old Fashioned (12 ¾ Oz.)
H: 3 ¾" T: 3 ½"
B: 3 ⅞" M: 3 ½"
2 Dz.



J4227
Hi Ball (11 Oz.)
H: 6 ½" T: 2 ¾"
B: 2 ⅞" M: 2 ¾"
2 Dz.



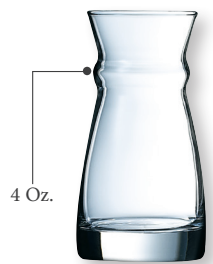
J4226
Collins (13 Oz.)
H: 6 ¾" T: 2 ½"
B: 2 ¼" M: 2 ½"
2 Dz.

NEW

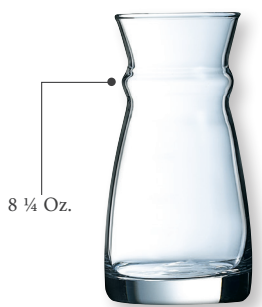


Q7781
Hi Ball (15 ½ Oz.)
H: 6 ¼" T: 2 ⅞"
B: 2 ½" M: 2 ⅞"
1 Dz.

★ ★ ★ ★
 DECANTERS,
 CARAFES &
 PITCHERS



L4213
 Fluid Carafe (4 Oz.)
 H: 4 3/8" M: 2 1/4"
 1 Dz.



L4212
 Fluid Carafe (8 1/4 Oz.)
 H: 5 1/4" M: 2 3/4"
 1 Dz.



L3963
 Fluid Carafe (16 3/4 Oz.)
 H: 7 1/2" M: 3 1/2"
 6 Pcs.



L4194
 Fluid Carafe with stopper (16 3/4 Oz.)
 H: 7 1/2" M: 3 1/2"
 6 Pcs.



FLUID CARAFES **ARCOROC**



L6247
Fluid Carafe (25 1/4 Oz.)
H: 8 1/4" M: 3 3/8"
6 Pcs.



L8689
Fluid Carafe with stopper (25 1/4 Oz.)
H: 8 1/4" M: 3 3/8"
6 Pcs.

NEW



Q4033
Fluid Carafe Frost Blue (25 1/4 Oz.)
H: 8 1/4" M: 3 3/8"
6 Pcs.

NEW



Q4025
Fluid Carafe Frost Green (25 1/4 Oz.)
H: 8 1/4" M: 3 3/8"
6 Pcs.

NEW



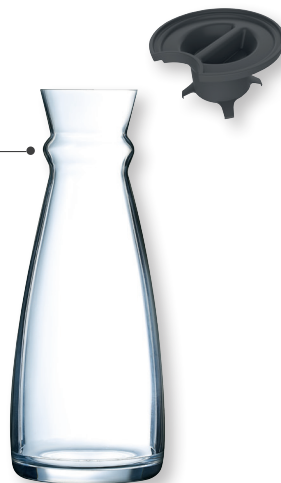
Q4026
Fluid Carafe Frost (25 1/4 Oz.)
H: 8 1/4" M: 3 3/8"
6 Pcs.

33 3/4 Oz.



L3965
Fluid Carafe (33 3/4 Oz.)
H: 10 3/8" M: 4 1/8"
6 Pcs.

33 3/4 Oz.



L4193
Fluid Carafe with stopper (33 3/4 Oz.)
H: 10 3/8" M: 4 1/8"
6 Pcs.

NEW



L4257
Black Stopper (fits L6247, Q4033, Q4025, Q4026 and L4194)
H: 1 1/2" M: 2 3/4"
2 Dz.

Capacity measurements are to the neck

★ ★ ★ ★ ★
DECANTERS, CARAFES & PITCHERS



CAP07
Ellis Bar Knife
L: 8 1/16"
1 Pc.



CA008
Ellis Sharpening Stone
L: 6 3/8"
1 Pc.



CAP12
Bar Knife/Sharpener Case *Fits CAP07 and CA008
Bar Knife and Sharpening Stone NOT included
1 Pc.



FK596
Mixing Beaker (20 Oz.)
H: 6 1/4" T: 3 1/2"
B: 3 1/2" M: 3 1/2"
8 Pcs.



FH517
Yarai Mixing Glass (14 3/4 Oz.)
H: 5 3/4" T: 4 3/8"
B: 3 1/2" M: 3 1/2"
4 Pcs.

NEW



OL167
Bitters Bottle/ Dasher Top (5 Oz.)
H: 4 3/8" T: 1 1/16"
B: 2 3/8" M: 2 3/8"
1 Pc.

NEW

Silicone 1/2" Bands (6 Pcs.)
(Colors Sold Separately)

- RBP04** Purple
- RBB02** Blue
- RBP01** Pink
- RBY03** Yellow
- RBDG3** Green
- RBO05** Orange
- RBW06** White
- RBR09** Red
- RBB06** Black
- RBBR7** Brown



NEW



OL166
Juice Bottle (16 Oz.)
H: 10 1/8" T: 1 1/8"
B: 2 3/8" M: 2 3/8"
6 Pcs.

MIX **ARCOROC**
BY
Chris Adams



MT849
Black Matte Shaker Tin (28 Oz.)
H: 7" T: 3 5/8"
B: 2 3/8" M: 3 5/8"
1 Pc.



CAP28
Shaker Tin (28 Oz.)
H: 7" T: 3 5/8"
B: 2 3/8" M: 3 5/8"
1 Pc.



The Mix Collection, designed by world renowned mixologist, Chris Adams, was made to withstand the rigor of high volume restaurants and bars, while still focusing on the craft.



MT850
Black Matte Shaker Tin (20 Oz.)
H: 5 1/2" T: 3 1/2"
B: 2 3/8" M: 3 1/2"
1 Pc.



CAP20
Shaker Tin (20 Oz.)
H: 5 1/2" T: 3 1/2"
B: 2 3/8" M: 3 1/2"
1 Pc.



CAP18
Shaker Tin (18 Oz.)
H: 5 1/4" T: 3 7/16"
B: 2 3/8" M: 3 7/16"
1 Pc.



CAP09
Muddler
L: 9 1/2"
1 Pc.

★★★
B A R W A R E

Above shakers fit perfectly within each other or with any pint mixing glass.

See Through Silicone Gauge!



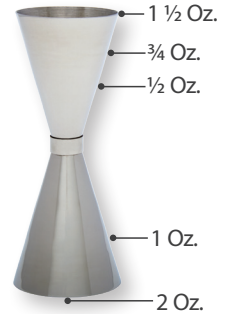
MT051
Ellis Jigger Black Matte
H: 3 1/4" T: 2"
B: 1 3/4" M: 2"
1 Pc.



CAP14
Ellis Adams Jigger Matte
H: 3 1/4" T: 2"
B: 1 3/4" M: 2"
1 Pc.



CAP32
Stainless Jigger
H: 3 1/4" T: 2"
B: 1 3/4" M: 2"
1 Pc.
*Inner Oz. indicators



CAP51
Tall Stainless Jigger
H: 5 1/8" T: 2"
B: 1 7/8" M: 2"
1 Pc.
*Inner Oz. indicators



CAP08
Dual Sided Hammer
Bar Spoon
L: 15 1/2"
1 Pc.



CAP05
Dual Sided Paddle
Bar Spoon
L: 15 3/4"
1 Pc.



CAP11
Dual Sided Teardrop
Bar Spoon
L: 15 3/4"
1 Pc.



MT011
Dual Sided Teardrop Bar
Spoon Black Matte
L: 15 3/4"
1 Pc.



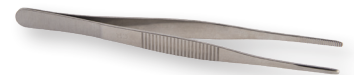
CAP04
Fine Mesh Strainer
L: 8 3/4" W: 3 1/8"
1 Pc.



MT004
Fine Mesh Strainer
Black Matte
L: 8 3/4" W: 3 1/8"
1 Pc.



CAP06
Ice Tongs
L: 6 1/2"
1 Pc.



CAP01
Tweezers
L: 6 1/4"
1 Pc.



MIX

ARCOROC
BY
Chris Adams

NEW



HS001
Hawthorne Strainer Stainless
L: 6 1/4" W: 3 3/8"
1 Pc.

NEW



HS002
Hawthorne Strainer Black Matte
L: 6 1/4" W: 3 3/8"
1 Pc.



CAP02
Julep Strainer
L: 7 1/16" W: 3"
1 Pc.



MT002
Julep Strainer Black Matte
L: 7 1/16" W: 3"
1 Pc.

★
★
★
BARWARE

ARCOROC OUTDOOR PERFECT STACKABLE

NEW



Made from fully recyclable, BPA-Free S.A.N. plastic, this new design offers all the great features of Outdoor Perfect, elevated with a stackable profile for easy space saving and a clean design for multi use.

NEW

OUTDOOR PERFECT STACKABLE

S.A.N. PLASTIC

ARCOROC



FN090
Rocks (10 1/2 Oz.)
H: 3 5/8" T: 3 5/8"
B: 2 1/2" M: 3 5/8"
3 Dz.



FN091
Double Old Fashioned (12 Oz.)
H: 3 7/8" T: 3 5/8"
B: 2 1/16" M: 3 5/8"
3 Dz.



FN092
Beverage (14 Oz.)
H: 5 1/16" T: 3 1/4"
B: 2 1/4" M: 3 1/4"
3 Dz.



FN093
Cooler (16 Oz.)
H: 5 3/4" T: 3 7/16"
B: 2 3/8" M: 3 7/16"
3 Dz.

For Cold Beverages ONLY

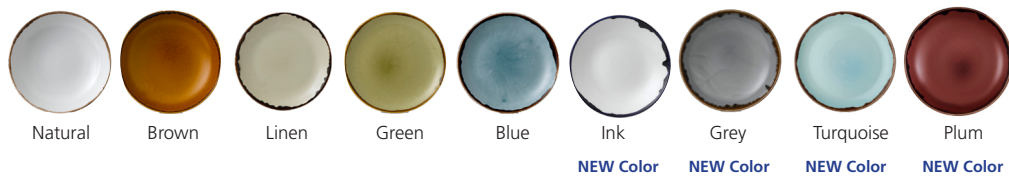
TECHNOLOGY & MATERIAL



S.A.N. PLASTIC



A handcrafted collection; each piece is individual. Made in England and designed with industrial toughness.





★ Coupe Plate **HN165** Natural
6 1/2" **HB165** Brown
1 Dz. **HL165** Linen
HG165 Green
HBL16 Blue
HI650 Ink
HG650 Grey
FN932 Turquoise
FP088 Plum



★ Coupe Plate **HN217** Natural
8 3/8" **HB217** Brown
1 Dz. **HL217** Linen
HG217 Green
HBL21 Blue
HI867 Ink
HG867 Grey
FN935 Turquoise
FP087 Plum



★ Coupe Plate **HN260** Natural
10 1/4" **HB260** Brown
1 Dz. **HL260** Linen
HG260 Green
HBL26 Blue
HI102 Ink
HG102 Grey
FN930 Turquoise
FP086 Plum



★ Coupe Plate **HN288** Natural
11 1/4" **HB288** Brown
1 Dz. **HL288** Linen
HG288 Green
HBL28 Blue
HI111 Ink
HG112 Grey
FN931 Turquoise
FP085 Plum

NEW



Flat Plate **HN317** Natural
12 1/2"
6 Pcs.

NEW



★ Coupe Plate **HG324** Green
12 3/4" **HB324** Blue
6 Pcs.



★ Coupe Bowl **HN182** Natural
7 1/4" 15 oz. **HB182** Brown
1 Dz. **HL182** Linen
HG182 Green
HBL18 Blue
HI725 Ink
HG725 Grey
FN928 Turquoise
FP090 Plum



★ Coupe Bowl **HN248** Natural
9 3/4" 40 oz. **HB248** Brown
1 Dz. **HL248** Linen
HG248 Green
HBL24 Blue
HI975 Ink
HG975 Grey
FN929 Turquoise
FP089 Plum



★ Deep Coupe **HN255** Natural
Plate **HB255** Brown
10" **HL255** Linen
1 Dz. **HG255** Green
HID10 Ink
HBL25 Blue
HGD10 Grey



★ Deep Coupe **HN281** Natural
Plate **HB281** Brown
11" **HL281** Linen
1 Dz. **HG281** Green
HID11 Ink
HBL11 Blue
HGD11 Grey

NEW



Organic Bowl **HN113** Natural
11 3/8"
6 Pcs.



Trace Organic Bowl **HN253** Natural
9 7/8" **HB253** Brown
1 Dz. **HL253** Linen
HG253 Green
HI978 Ink
HBL38 Blue
HG978 Grey

TECHNOLOGY & MATERIAL



★ ★ ★ ★ ★
DINNERWARE



NEW



Organic Coupe FN941 Turquoise
Bowl
8 1/8" (15 oz.)
1 Dz.

NEW



Organic Coupe FN942 Turquoise
Bowl
9 3/4" (28 oz.)
1 Dz.

NEW



Organic Coupe FN940 Turquoise
Bowl
11" (47 1/2 oz.)
1 Dz.

NEW



Walled Plate HN86 Natural
8 1/4" **HB867** Blue
6 Pcs. **FP111** Ink

NEW



Walled Plate HN10 Natural
10 1/4" **HB102** Blue
6 Pcs. **FP112** Ink

NEW



Organic Rectangular FN943 Turquoise
Plate FP091 Plum
10 5/8" x 6 1/4"
1 Dz.



Small Rectangular HN001 Natural
Tray HB001 Brown
11 1/4" x 7 1/2" **HL001** Linen
6 Pcs. **HG001** Green
HIR11 Ink
HBL00 Blue
HGR11 Grey



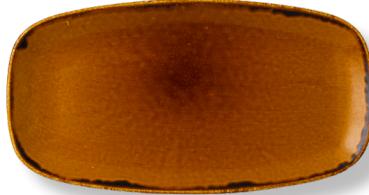
Large Rectangular HN002 Natural
Tray HB002 Brown
13 1/4" x 9" **HL002** Linen
6 Pcs. **HG002** Green
HIR13 Ink
HBL01 Blue
HGR13 Grey

TECHNOLOGY & MATERIAL





Chefs' Oblong Plate **HN298** Natural
 11 3/4" x 6"
 1 Dz. **HB298** Brown
HL298 Linen
HG298 Green
HIC11 Ink
HBL29 Blue
HGC11 Grey



Chefs' Oblong Plate **HN355** Natural
 13 7/8" x 7 3/8"
 6 Pcs. **HB355** Brown
HL355 Linen
HG355 Green
HIC13 Ink
HBL35 Blue
HGC13 Grey

NEW



Organic Coupe Rectangular Platter **FN946** Turquoise
FP092 Plum
 13 5/8" x 6 1/4"
 6 Pcs.

NEW



Deep Bowl (16 1/2 oz.) **HND63** Natural
 6 7/8" x 5 3/4" **HB634** Blue
 6 Pcs.

NEW



Deep Bowl (18 oz.) **HND77** Natural
 7 7/8" x 6 5/8" **HB778** Blue
 6 Pcs.



Beverage Pot **FM729** Natural
 13 1/2 oz.
 4 Pcs.



Jug **FM730** Natural
 5 1/2 oz. **HI145** Ink
 4 Pcs.



★ **Mug** **FM739** Natural
 12 oz. **HI113** Ink
 1 Dz.



★ **Cappuccino Cup** **FM732** Natural
 12 oz. (Fits FM736)
 1 Dz.



★ **Coffee/ Tea Cup** **FM733** Natural
 8 oz. **HI227** Ink
 1 Dz. (Fits FM736)



★ **Saucer** **FM736** Natural
 6 1/4" **HI156** Ink
 1 Dz.



★ **Espresso Cup** **FM737** Natural
 3 1/2 oz.
 1 Dz.



★ **Espresso Saucer** **FM738** Natural
 4 1/2"
 1 Dz.



Sauce Dish **FM740** Natural
 3 oz.
 1 Dz.



★ **Sugar Bowl/ Bouillon** **FM741** Natural
 8 oz. (Fits FM736)
 1 Dz.

★ ★ ★ ★ ★
 D I N N E R W A R E

T E C H N O L O G Y & M A T E R I A L




DUDSON

ORGANIC WHITE

NEW



A collection of exclusive shapes. Organic White designs feature a subtle irregular edge and hand-thrown embossment. Manufactured in Dudson's Finest Vitrified body, the collection has the industrial toughness to stand up to every day use in a professional kitchen.

NEW

ORGANIC WHITE

VITRIFIED CERAMIC



Coupe Plate FN879
6 3/8"
1 Dz.



Coupe Plate FN878
9"
1 Dz.



Coupe Plate FN877
10 3/4"
1 Dz.



Coupe Plate FN876
11 1/8"
1 Dz.



Flat Plate FN899
12 1/2"
6 Pcs.



Coupe Bowl FN880
6" 10 1/2 oz.
1 Dz.



Coupe Bowl FN898
8 1/8" 15 1/2 oz.
1 Dz.



Coupe Bowl FN897
9 3/4" 28 oz.
1 Dz.



Coupe Bowl FN884
11" 47 1/2 oz.
1 Dz.



Coupe Wobbly Bowl FN924
11 5/8" 52 7/16 oz.
6 Pcs.



Deep Bowl FN883
6 7/8" x 5 3/4"
16 1/2 oz.
6 Pcs.



Deep Bowl FN923
7 7/8" x 6 5/8"
18 oz.
6 Pcs.



Rectangular Tray FN882
11 1/4" x 7 3/4"
6 Pcs.



Rectangular Tray FN922
13 1/2" x 9 1/8"
6 Pcs.



Coupe Rectangular Plate FN881
10 5/8" x 6 1/4"
1 Dz.



Coupe Rectangular Plate FN885
13 3/4" x 6 1/4"
6 Pcs.

TECHNOLOGY & MATERIAL



★ ★ ★ ★ ★
DINNERWARE





FM550 Soup Plate 8 1/2" (11 oz.)
 T: 8 1/2" H: 1 1/2" 1 Dz.
FM562 Soup Plate 9 1/2" (12 oz.)
 T: 9 1/2" H: 1 1/2" 1 Dz.



FM552 Soup/Pasta Plate 11 3/8" (18 oz.)
 T: 11 3/8" H: 1 5/8" 1 Dz.

NEW



EP777 Deep Oval Bowl 6 1/2" (16 oz.)
 L: 6 1/2" W: 5" H: 2" 1 Dz.



FM557 Chefs' Bowl 8" (30 oz.)
 T: 8" H: 2 1/4" 1 Dz.
FM561 Chefs' Bowl 10 1/2" (52 oz.)
 T: 10 1/2" H: 2 1/4" 3 pcs.

NEW



FN097 Soup Bowl (9 1/2 oz.)
 T: 3 3/4" H: 2 1/4"
 3 Dz.



FM567 Continental Bowl (12 oz.)
 T: 4 5/8" H: 2 1/4"
 3 Dz.



FM537 Bouillon/Sugar (7 3/4 oz.)
 T: 4" H: 2 1/4"
 3 Dz. (Fits FM903)



FM555 Fruit Dish 4 7/8" (5 3/4 oz.)
 T: 4 7/8" H: 1 1/8"
 3 Dz.

NEW



FN808 Teapot w/ Lid (13 oz.)
 L: 7" W: 4 1/2" H: 4 3/4"
 8 Pcs.

NEW



FN809 Creamer No Handle (4 1/2 oz.)
 T: 3" H: 2 3/4" M: 3"
 1 Dz.

★
★
★
★
★
DINNERWARE

TECHNOLOGY & MATERIAL

VITRIFIED
 CERAMIC



ETERNITY PLUS

VITRIFIED CERAMIC

C&S
Chef & Sommelier
- FRANCE -



FM540
Teasaucer Avalon 5 3/8"
3 Dz.



FM541
Teacup (8 oz.)
T: 3 1/8" H: 2 3/4" M: 4"
3 Dz. (Fits FM540)



FM543
Hudson Mug (11 1/2 oz.)
T: 3 1/8" H: 3 3/4" M: 4 1/2"
3 Dz. (Fits FM540)



FM563
Mug (9 1/2 oz.)
T: 3 1/8" H: 3 1/2" M: 4 1/4"
3 Dz. (Fits FM540)



FM559
Apex Mug (12 oz.)
T: 3 1/2" H: 4 1/2" M: 5"
18 pcs. (Fits FM540)



FM546
Kone Mug (12 oz.)
T: 3 3/8" H: 4" M: 4 5/8"
18 pcs. (Fits FM540)

NEW



FM713
Teacup (5 1/2 oz.)
T: 3 1/4" H: 2 1/4" M: 4 1/4"
36 pcs. (Fits FM540)

NEW



FM903
Teasaucer 5 3/4"
36 pcs.

NEW



FM902
Teacup (7 1/2 oz.)
T: 3 3/4" H: 2 1/4" M: 4 3/4"
36 pcs. (Fits FM903)

NEW



FM904
Coffee Cup (11 oz.)
T: 4 1/4" H: 2 1/2" M: 5 1/2"
36 pcs. (Fits FM903)

NEW



FM900
AD Cup (3 1/3 oz.)
T: 2 1/2" H: 2 1/8" M: 3 1/2"
36 pcs. (Fits FM901)

NEW



FM901
AD Saucer 4 5/8"
36 pcs.

★ ★ ★ ★ ★
DINNERWARE

T E C H N O L O G Y & M A T E R I A L

VITRIFIED
CERAMIC



ARCOROC OPAL DINNERWARE



PLATES

INTENSITY COLLECTION



G4394/V1540 B&B Plate 6 1/4" 2 Dz.



G4391/V1539 Salad Plate 8" 2 Dz.
H7496/V1537 Plate 9 1/2" 2 Dz.



P3964/V1536 Banquet Plate 10" 1 Dz.



P3962/V1653 Dinner Plate 10 3/4" 1 Dz.

RESTURANT WHITE COLLECTION



58621 Narrow Rim B&B Plate 6" 2 Dz.
57974 Narrow Rim Side Plate 7 1/2" 2 Dz.
57975 Narrow Rim Lunch Plate 9 1/4" 2 Dz.
N6393 Narrow Rim Dinner Plate 10 1/4" 1 Dz.

NEW



L6850 Deep Plate 9 3/4" 1 Dz.



22506 Wide Rim B&B Plate 6" 2 Dz.
22530 Wide Rim Side Plate 7 1/2" 2 Dz.
22522 Wide Rim Lunch Plate 9 3/8" 2 Dz.
24742 Wide Rim Dinner Plate 10" 2 Dz.

EVOLUTIONS WHITE COLLECTION



N9362 Coupe Dessert Plate 7 1/4" 2 Dz.



N9361 Coupe Plate 10" 2 Dz.
N9360 Coupe Plate 10 5/8" 2 Dz.



N9411 Coupe Soup 7 3/4" (26 1/4 Oz.) 2 Dz.
N9408 Deep Plate 10 1/8" (40 1/2 Oz.) 2 Dz.

T E C H N O L O G Y & M A T E R I A L



Intensity Collection "V" Item Numbers Available In Q4

★
★
★

D I N N E R W A R E

ARCOROC OPAL DINNERWARE

SPECIALTY

EVOLUTIONS WHITE COLLECTION



N9364 Oval Platter 9 3/4" x 13" 1 Dz.



N9404 Rectangular Plate 8 1/4" x 7 1/4" 2 Dz.

N9403 Rectangular Plate 11" x 9" 1 Dz.

N9402 Rectangular Platter 13 3/4" x 9 1/4" 1 Dz.



N9406 Pizza Plate 12 1/2" 1 Dz.



N9407 Steak Plate 11 3/4" x 10" 1 Dz.



N9405 Pasta Plate 11 1/8" (38 3/4 Oz.) 1 Dz.

RESTAURANT WHITE COLLECTION



P3967 Oval Platter 11 1/2" 1 Dz.

67107 Oval Platter 12 1/2" 2 Dz.

NEW



P3979 Compartment Plate 10" 1 Dz.



29337 Hospital Heat System Plate 8 3/4" 2 Dz.



22514 Rim Soup 9" (23 Oz.) 2 Dz.



G4396/V1538 Rim Soup/Pasta Bowl 8 1/2" (11 3/4 Oz.) 2 Dz.

INTENSITY COLLECTION

TECHNOLOGY & MATERIAL



★
★
★
DINNERWARE

BOWLS

EVOLUTIONS WHITE COLLECTION



N9397 Ramekin 3 1/2" (6 1/4 Oz.) 3 Dz.



N9396 Bowl 4 5/8" (13 1/2 Oz.) 3 Dz.
N9395 Bowl 5 5/8" (25 1/4 Oz.) 2 Dz.
N9365 Bowl 7" (33 3/4 Oz.) 1 Dz.
N9363 Bowl 8 1/4" (71 1/4 Oz.) 1 Dz.



N9401 Service Dish 7" (1.3 L) 2 Dz.
N9399 Service Dish 10" (2.8 L) 6 Pcs.
N9398 Service Dish 11 3/4" (4 L) 3 Pcs.

NEW



• **P9773** Bowl 6 1/16" (20 1/4 Oz.) 1 Dz.
 • **P9772** Bowl 8 1/4" (32 Oz.) 1 Dz.
 • **P9771** Bowl 9 7/8" (47 Oz.) 1 Dz.

RESTAURANT WHITE COLLECTION



25285 Fruit Bowl 4 3/4" (3 1/2 Oz.) 3 Dz.
25293 Grapefruit Bowl 6 1/4" (7 Oz.) 3 Dz.



• **43319** Bowl 4 3/4" (10 1/2 Oz.) 3 Dz.



• **28891** Double Handled Bowl
 H: 2 1/4" M: 4" (10 1/2 Oz.) 2 Dz.



50061 Multi-Usage Bowl 6 1/4" (15 Oz.) 2 Dz.

BEVERAGE

RESTAURANT WHITE COLLECTION



• **64733** Mug H: 3 1/2" M: 4 3/8" (10 Oz.) 3 Dz.



• **36140** Mug H: 3 1/2" T: 2 3/4" B: 2 1/2" M: 4" (8 Oz.) 3 Dz.



• **25269** Tall Cup H: 2 7/8" M: 3" (7 1/2 Oz.) 4 Dz.
22712 Saucer 5 7/8" 3 Dz.



• **22662** Cup (2 3/4 Oz.) 4 Dz.
22670 Saucer 4 1/4" 4 Dz.



• **14611** Cup H: 2 3/4" M: 3 1/4" (8 Oz.) 3 Dz.
22712 Saucer 5 7/8" 3 Dz.

TECHNOLOGY & MATERIAL



DINNERWARE



BLACK OAK SATIN 18/10 NEW

The sleek satin look of this bark like design brings a modern twist to the trendy natural aesthetic.

Available Q3

FN995

Dinner Fork 8 1/8" 3 Dz.

FN996

Dinner Knife (SH) 9 3/8" 3 Dz.

FN997

Dessert Spoon 7 3/8" 3 Dz.

FN998

Salad/Dessert Fork 7 1/2" 3 Dz.

FP001

US Teaspoon 6 1/8" 3 Dz.



EVE 18/10 NEW

This elegant mirror pattern is enhanced with the ergonomically designed beveled handle that fits perfectly in your hand.

SOE04

Table Knife (SH) 9 7/32" 1 dz.

SOE01

Table Fork 8 1/8" 1 dz.

SOE02

Tablespoon 8 1/8" 1 dz.

SOE08

Dessert Knife 8 1/4" 1 dz.

SOE05

Dessert Fork 7 1/4" 1 dz.

SOE06

Dessert Spoon 7 1/4" 1 dz.

SOE28

American Teaspoon 6 1/4" 1 dz.

SOE10

Teaspoon 5 11/16" 1 dz.

SOE11

Coffee Spoon 4 11/16" 1 dz.

SOE20

Cake Fork 6 1/4" 1 dz.

Accessories Are Now Stocked!

NEW LUXUS SAND 18/10

The elegant sand touch at the bottom of the handle is a unique design on this stylish pattern.

- | | |
|--|--|
| SOL04
Table Knife (SH) 9 1/16" 1 dz. | SOL28
American Teaspoon 5 1/4" 1 dz. |
| SOL01
Table Fork 8 3/16" 1 dz. | SOL10
Teaspoon 5 1/2" 1 dz. |
| SOL02
Tablespoon 8 3/16" 1 dz. | SOL11
Coffee Spoon 4 5/16" 1 dz. |
| SOL08
Dessert Knife 8" 1 dz. | SOL20
Cake Fork 6 7/16" 1 dz. |
| SOL05
Dessert Fork 7 5/16" 1 dz. | SOL13
Fish Knife 8 1/8" 1 dz. |
| SOL06
Dessert Spoon 7 5/16" 1 dz. | |

Accessories Are Now Stocked!



NEW MIRACLE 18/10

The Honeycomb design hides all imperfections but not the perfect style of this pattern.

- | | |
|--|---|
| SOM04
Table Knife (SH) 9 3/16" 1 dz. | SOM28
American Teaspoon 6 1/16" 1 dz. |
| SOM01
Table Fork 8 3/16" 1 dz. | SOM10
Teaspoon 5 13/16" 1 dz. |
| SOM02
Tablespoon 8" 1 dz. | SOM11
Coffee Spoon 4 9/16" 1 dz. |
| SOM08
Dessert Knife 8 3/16" 1 dz. | SOM20
Cake Fork 5 15/16" 1 dz. |
| SOM05
Dessert Fork 7 1/4" 1 dz. | SOM13
Fish Knife 8 1/2" 1 dz. |
| SOM06
Dessert Spoon 7 7/16" 1 dz. | |

Accessories Are Now Stocked!



STEAK KNIVES



FJ611
 Regal Steak Knife (Rounded Tip) 9 3/8" 1 Dz.



FJ612
 Regal Steak Knife (Pointed Tip) 9 3/8" 1 Dz.



FK603
 Regal Steak Knife - Grey (Pointed Tip) 9 3/8" 1 Dz.



FM006
 Marble Steak Knife, Serrated 9 1/4" 1 Dz.



FK307
 Ellitte Steak Knife (Rounded Tip) 10 7/8" 1 Dz.

NEW



FN727
 Marble Steak Knife, Non-Serrated 9 1/4" 1 Dz.



ESK01
 Chelsea Steak Knife 10" 6 Pcs.



FJ605
 Grand Steak Knife (Rounded Tip) 9 7/8" 1 Dz.



FJ517
 Imperial Steak Knife (Solid Red) 9 5/8" 1 Dz.



FK491
 Steak Knife Box (Holds 6 Knives)
 (fits FJ506, FJ507, FJ508, FJ509, FJ516,
 FJ517, FM006, FJ611, FJ612, FK603)
 10 3/8" x 5 5/16" x 1 3/4"
 1 Dz.
 Knives not included



FJ516
 Imperial Steak Knife (Solid Black) 9 5/8" 1 Dz.



FJ509
 Imperial Steak Knife (Solid Grey) 9 5/8" 1 Dz.

H A N D L E M A T E R I A L

● POM

● Pakkawood

● Acrylic

★ ★ ★ ★ ★
 F L A T W A R E

STEAK KNIVES



FJ507
Imperial Steak Knife (Brown/Black) 9 5/8" 1 Dz.



FJ506
Imperial Steak Knife (Grey) 9 5/8" 1 Dz.



FJ508
Royale Steak Knife (Cherry) 9" 1 Dz.



FM026
Black Oak Steak Knife 9 1/2" 3 Dz.



MB276
Cloud Steak Knife (SH) 9 1/4" 1 dz.



T0426
Universal (Lazzo) Steak Knife (SH) 9 1/2" 3 Dz.

STEAK KNIVES



ELG01
Beverly Steak Knife 9" 6 pcs.



EQ295
Burlington Steak Knife (SH) 9" 1 Dz.



FG726
Capitale Steak Knife (HH) 9" 6 pcs.



T1826
Vesca Steak Knife (SH) 9 3/8" 1 Dz.

H A N D L E M A T E R I A L

● Pakkawood

● POM

★
★
★
★
★
FLATWARE



Manufactured from powder coated steel which protects from rust and scratches, podiums add different height elevations to the buffet. Available in 3 colors, black, white and copper



Q5214
Onctuous (7 ½ Oz.) 22 CL
2 Dz.



Q5217
Lid for Onctuous
2 Dz.

Pictured above. Perfect addition for parfaits and single servings

NEW

DOMINO | STEEL

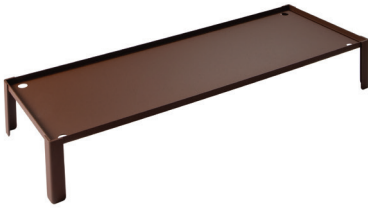
abert
BUFFETWARE



Domino Podium FP034 White
L: 15 3/4" W: 7 7/8" H: 3 1/2" **FP032** Black
1 Pc. **FP033** Copper
Fits 2 Tiles



Domino Podium FP037 White
L: 15 3/4" W: 7 7/8" H: 7 7/8" **FP035** Black
1 Pc. **FP036** Copper
Fits 2 Tiles



Domino Podium FP040 White
L: 23 5/8" W: 7 7/8" H: 3 1/2" **FP038** Black
1 Pc. **FP039** Copper
Fits 3 Tiles



Domino Podium FP043 White
L: 23 5/8" W: 7 7/8" H: 7 7/8" **FP041** Black
1 Pc. **FP042** Copper
Fits 3 Tiles



Domino Podium FP046 White
L: 15 3/4" W: 15 3/4" H: 3 1/2" **FP044** Black
1 Pc. **FP045** Copper
Fits 4 Tiles



Domino Podium FP049 White
L: 23 5/8" W: 15 3/4" H: 3 1/2" **FP047** Black
1 Pc. **FP048** Copper
Fits 6 Tiles

Perfectly Matches The Domino Wood Frames
Smooth Finish Ensures The Stands Will Not Scratch Any Surfaces
Two Different Height Options For Each Size Are Offered For Adding Elevation
Fits Tile Options On Page 47

★
★
★
★
DISPLAY • RISERS



Domino frames are made in Ash wood, known for being a dense and durable wood featuring meandering grain patterns. Each frame is stackable which is perfect for doubling up to add elevation on the buffet and for easy storage.

NEW

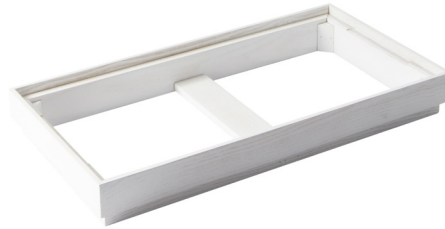
DOMINO

SOLID WOOD

abert
BUFFETWARE

Domino Frame FP021 White
L: 15 3/4" W: 7 7/8" H: 2" **FP022** Black
1 Pc.

Fits 2 Tiles or the 3- Pitcher Stand



Domino Frame FP023 White
L: 23 5/8" W: 7 7/8" H: 2" **FP024** Black
1 Pc.

Fits 3 Tiles Alone,
Ice Pack Holder & Cover Alone,
Or A Tile And 3 Pitcher Stand



Domino Frame FP025 White
L: 15 3/4" W: 15 3/4" H: 2" **FP026** Black
1 Pc.

Fits 4 Tiles Alone
Or A Combo Of Tiles &
The 3 Pitcher Stand



Domino Frame FP027 White
L: 23 5/8" W: 15 3/4" H: 2" **FP028** Black
1 Pc.

Fits 6 Tiles Alone,
A Combo Of Tiles,
Ice Pack Holder & Cover,
Or The 3 Pitcher Stand



Stackable - perfect for doubling up to add elevation on the buffet and for easy storage
See Tile & Steel Accessories On Page 46 & 47

★
★
★
★
DISPLAY • RISERS



Tiles from Domino collection are made in vitrified porcelain; a material strong, resistant to wear and tear, light and water, oil and grease proof.
Mix the various pattern tiles with Domino frames and Domino podiums to create a unique buffet.

DISPLAY • RISERS



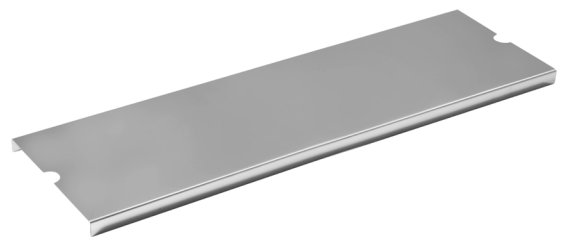
Domino Rectangular Ice Pack FP063
1 Pc.



3-Pitcher Stand FP061
L: 15 3/4" W: 7 7/8"
1 Pc.
Fits Domino Wood Frames



Ice-Pack / Crumb Holder FP060
L: 23 5/8" W: 6 1/4"
1 Pc.
Fits The Domino Frame
FP023, FP024, FP027 or FP028



Ice-Pack Cover Per Thermal Set FP058
L: 22" W: 6 1/4"
1 Pc.

NEW

DOMINO

PORCELAIN

abert
BUFFETWARE

Domino Gray Mix Tile FP012

L: 7 7/8" W: 7 7/8"
25 Pcs.

Other styles shown on ArcCardinal.com



Domino Blue Mix Tile FP017

L: 7 7/8" W: 7 7/8"
25 Pcs.

Other styles shown on ArcCardinal.com



Domino Copper Mix Tile FP016

L: 7 7/8" W: 7 7/8"
25 Pcs.

Other styles shown on ArcCardinal.com



Domino Tan Mix Tile FP020

L: 7 7/8" W: 7 7/8"
25 Pcs.

Other styles shown on ArcCardinal.com



Domino Dark Grey Tile FP019

L: 7 7/8" W: 7 7/8"
25 Pcs.



Domino Light Grey Tile FP018

L: 7 7/8" W: 7 7/8"
25 Pcs.



★
★
★
★
DISPLAY • RISERS



Unique by design and functionality, simple clean lines and effortless dispensing will compliment any buffet



Juice Dispenser FP054
8 Liters
H: 22"
1 Pc.

Juice dispenser made in durable acrylic that offers an exceptional clarity and it can be used with or without the included Ice pack to keep drinks cold.



Coffee Urn FP055
10 Liters
H: 20 1/8"
1 Pc.

Heated by chafing fuel, the coffee urn made in stainless steel is easy to transport due to the two nobs on each side.



Individual Cereal Dispenser FP056
3 Liters
H: 20 7/8"
1 Pc.

This cereal dispenser has a rubber paddle which dispenses a controlled portion of cereal or snacks.



Jam/Honey Dispenser FP067
Base: 13 3/8" x 5"
Max Height: 22 7/8"
1 Pc.

The jam/honey dispenser can be use with the Jambee Nozzle (FP068- sold separately) to infuse jam or honey into a croissant or muffin and has a disk inside the tube that cleans the walls of the dispenser.



Jambee Nozzle 18/10 FP068
1 Pc.

Nozzle to be used with Jam & Honey Dispenser (FP067)



Drip Tray w/ Grill 18/10 FP062
L: 6 1/4" W: 6 1/4"
1 Pc.

Optional magnetic drip tray sold separately can be use for the coffee urn and the juice dispenser.

NEW

COSMO | IMPERFETTO

abert
BUFFETWARE



Centerpiece Wood 18/10 FP051
D: 12 ¼" H: 2 ¾"
1 Pc.



Centerpiece Wood 18/10 FP050
D: 14 ½" H: 1 ½"
1 Pc.



Centerpiece Wood 18/10 FP053
D: 16 ½" H: 2 ¾"
1 Pc.



Centerpiece Wood 18/10 FP052
D: 14 ½" H: 2 ¾"
1 Pc.

Platters that brings design to the buffet and allows a nice presentation of the food.

CHAFFING DISH



Chafing Dish GN 2/3 with Black Support FP057
L:16 ¼ W:16 H:10 ¼
1 Pc.

18/10 chafing dish that will perfectly match with the rest of the collections

Includes a durable black powder coated steel standard removable pan and electric heating unit. Can be heated by chafing fuel or electric unit

★
★
★
★
DISPLAY • RISERS



Mix&Play ready-to-use sets are made from wood with a power coated steel stand.
The 3 different structures can be combined together to offer an even larger buffet set.



Mix&Play Revolution Set A FP064
L: 27 1/2" W: 20 5/8" H: 9 1/2"
1 Pc.



Mix&Play Revolution Set B FP065
L: 27 1/2" W: 20 5/8" H: 8 7/8"
1 Pc.



Mix&Play Revolution Set C FP066
L: 27 1/2" W: 20 5/8" H: 8 7/8"
1 Pc.

NEW



Buffet Stand FP029
L:11" W: 11" H: 7 7/8"
1 Pc.



Buffet Stand FP030
L:11" W: 11" H: 9 7/8"
1 Pc.



Buffet Stand FP031
L:11" W: 11" H: 11 3/4"
1 Pc.



Base, Round, Matte Black FP059
W: 7 1/4"
1 Pc.

Arc Cardinal Items That Fit
FH289 (Candour)
R0947 (Vintage)
N9362 (Evolutions)
N2420 (Louison)



★
★
★
★
DISPLAY • RISERS

On Stage stands are made in powder coated stainless steel Add elevation to the buffet and possibility to use the stand with or without the base and to replace it by a salad bowl.

CHASSEUR

ROUND & OVAL CASSEROLE **NEW**



Cast iron is compatible with all heat sources including induction which makes the perfect presentation for any buffet. It makes a dramatic statement with its stylish look and trendy colors as well as retaining its heat while serving up favorite buffet items.

NEW

ROUND & OVAL CASSEROLE

CHASSEUR



Mini Round Casserole **FN421** Matte Black
FN422 Red
 0.37 Q (11 7/8 oz.)
 3 1/8" (10 cm)
 1 Pc.



Mini Round Casserole **FN423** Matte Black
FN424 Red
 0.63 Q (20 1/4 oz.)
 4 3/4" (12 cm)
 1 Pc.



Round Casserole **FN425** Matte Black
FN426 Red
FN949 Quartz *NEW COLOR*
FN950 Grey *NEW COLOR*
 4.23 Q (135 oz.)
 9 1/2" (24 cm)
 1 Pc.
Available Q3



Round Casserole **FN427** Matte Black
FN428 Red
FN951 Quartz *NEW COLOR*
FN952 Grey *NEW COLOR*
 6.44 Q (206 oz.)
 11" (28 cm)
 1 Pc.
Available Q3



WARE

SERVE

•

COOKWARE

•

NEW

TRIVETS

ARCOROC



FN976
 Round Trivet
 10"
 6 Pc.
Available Q3



FN977
 Oval Trivet
 L: 11 1/2" W: 10"
 6 Pc.
Available Q3



FN978
 Oval Trivet
 L: 13" W: 8 1/2"
 6 Pc.
Available Q3



**Richardson
Sheffield**
Since 1839

UNIVERSAL

NEW



A traditional design made with MOV steel and a high-quality ABS handle is a must have in any professional kitchen. The rounded back of the blade offers optimum comfort during use. A broad range including a sharpener to keep the perfect cutting edge.



ROUND
BACK



EXTRA
SHARP



Max 140 degrees Fahrenheit;
Phosphate free; low salt

NEW



FN201 Boning Knife 5" 6 Pcs.



FN202 Sticking Knife 6.5" 6 Pcs.



FN203 Carving Knife 7" 6 Pcs.



FN204 Flexible Sole Knife 7" 6 Pcs.



FN698 Universal Chef Knife 8" 6 Pcs.



Measurements Are Blade Length Except Cleaver

NEW

UNIVERSAL



Richardson
Sheffield
Since 1839



FN206 Butcher Knife 8" 6 Pcs.



FN208 Bread Knife 8" 6 Pcs.



FN207 Butcher Knife w/ Notches 10" 6 Pcs.



FN209 Ham/Salmon 10" 6 Pcs..



FN210 Cleaver 12" 6 Pcs.



FN205 Carving Fork 12 3/4" 6 Pcs.



FN211 Poultry Shears 10" 6 Pcs.



FN212 Sharpener 12" 6 Pcs.



FN213 Genoise Knife 12" 6 Pcs.



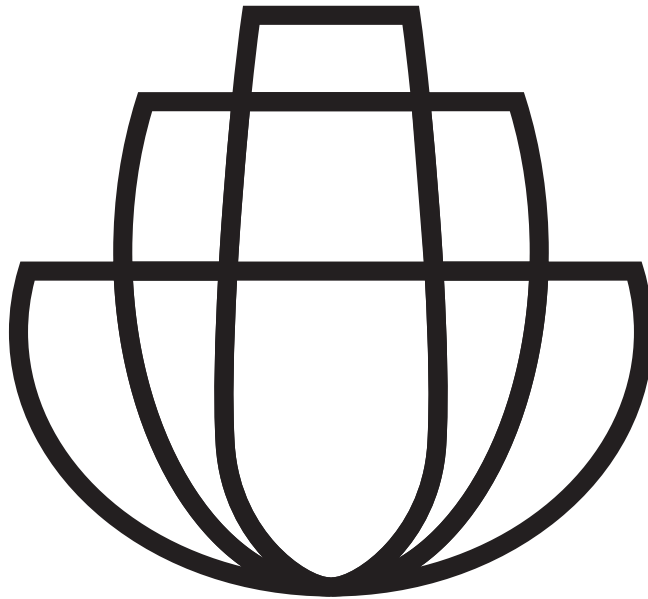
FN214 Kebab Knife 16" 6 Pcs.



Measurements Are Blade Length Except Cleaver



CHEF KNIVES • CUTLERY



45A Commerce Way Totowa, NJ 07512

Tel – 973.628.0900 Fax – 973.633.5555

cardinalsales@arc-intl.com

www.arccardinal.com

