

Trouble shooting process for S series Range

1. The fault list

| Description of issue | Troubleshooting process |
|--------------------------------|-------------------------|
| THE PILOT LIGHT WON'T STAY LIT | Step 1 to step 6 |

2. Trouble shooting process

Step 1

Check the gas type and pressure in the inlet pipe, change the gas type or adjust gas pressure if they don't conform to the user's manual.



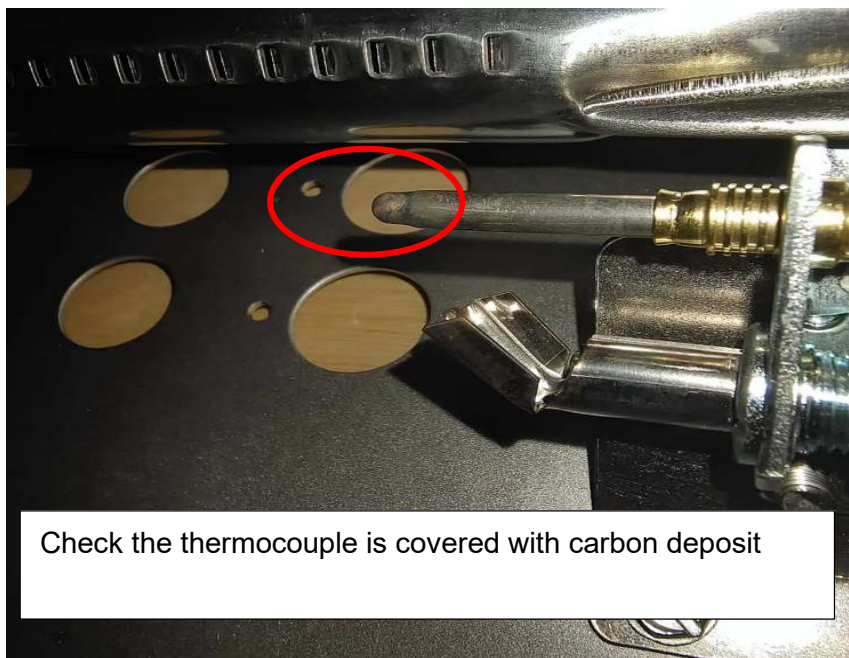
Step 2

Take out the baking frame, the bracket, and the bottom plate from



Step 3

If the top of the thermocouple is covered with carbon deposit, you should clean the carbon deposit.

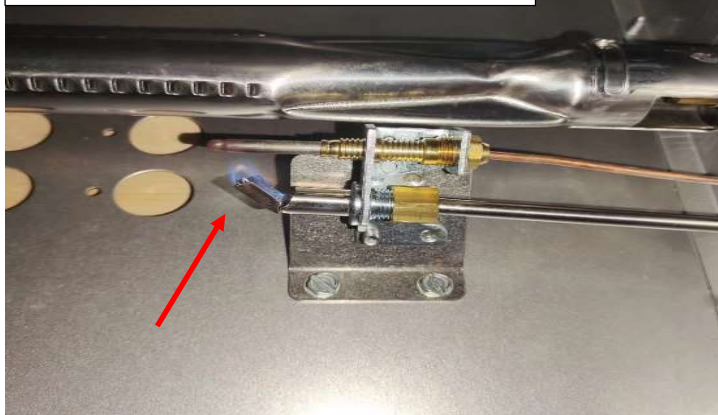


Check the thermocouple is covered with carbon deposit

Step 4

- Lighting the pilot according to the instructions, If no flame or the flame is smaller than the normal, Please dismantle and check the pilot and the nozzles for blockages.

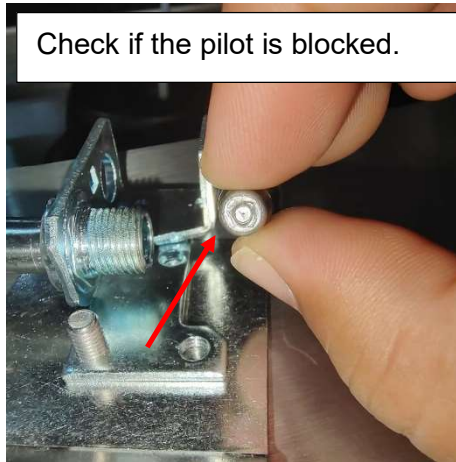
The flame is smaller than the normal.



dismantle the pilot and the nozzles



Check if the pilot is blocked.



If confirmed that the pilot nozzle is not blocked, and still unable to ignite the pilot, , the gas valve needs to be replaced.

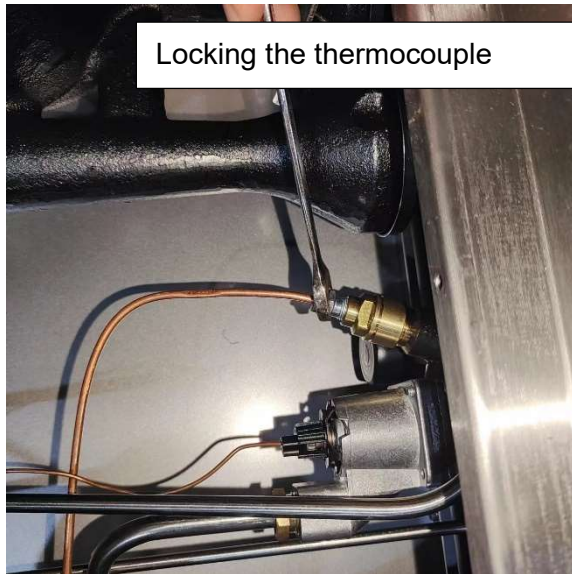


Step 5

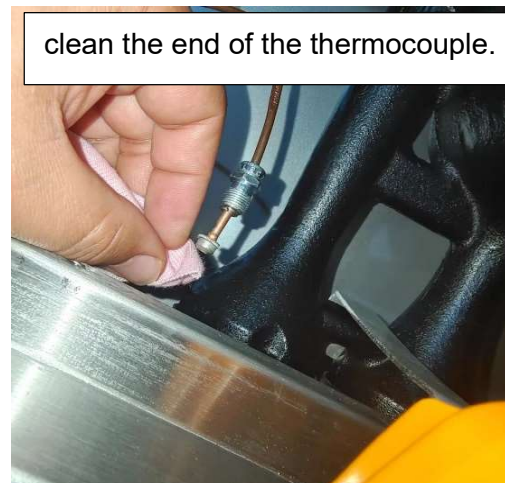
Poor contact or damaged thermocouple at the connection between thermocouple and gas valve: The flame is OK, but it won't stay the lit.

- Use a wrench to tighten the connection between the thermocouple and the gas

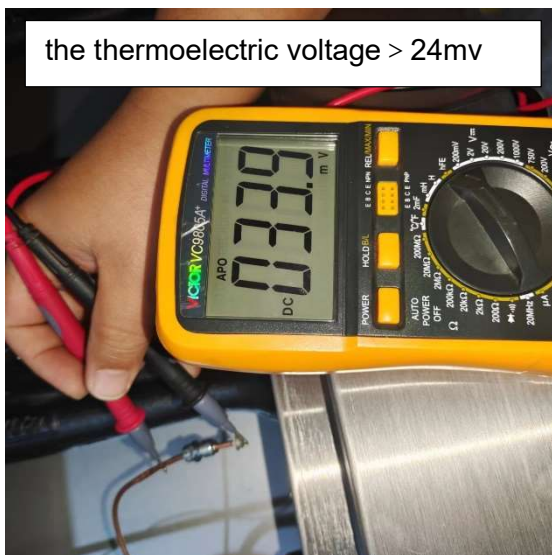
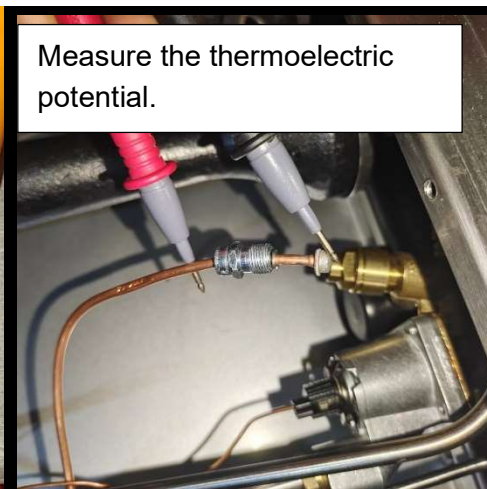
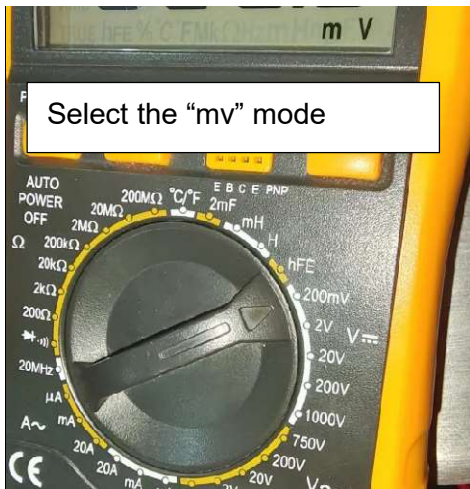
valve.



- If the trouble still occurs, you should remove the thermocouple connector from the gas valve end, and clean the end of the thermocouple with a cloth and reinstall it for locking.

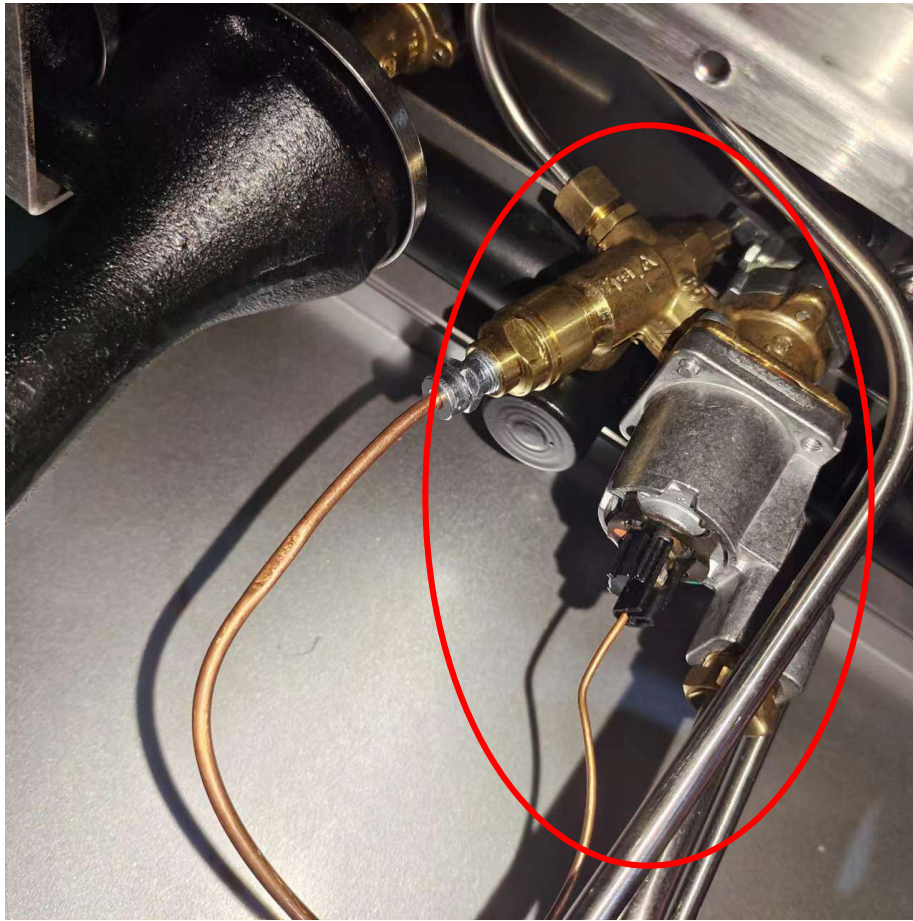


- If the trouble still occurs,, Remove the thermocouple connector at the gas valve end again, light the pilot, and continuously press the knob to ignite for more than 10 seconds. Measure the thermoelectric voltage of thermocouples, it must be greater than 24mv, otherwise the thermocouple needs to be replaced.



Step 6

The gas valve is damaged: If the trouble still cannot be eliminated after the Step 5, it should replace the gas valve.



3. For the further analysis, please provide the following information which is marked "V" during maintenance process.

| Description of issue | Gas pressure | Operating temperature | The pilot continue to light | Combustion state of the pilot | The thermocouple is covered with carbon deposit | the thermoelectric voltage | Fault pictures and videos |
|--------------------------------|--------------|-----------------------|-----------------------------|-------------------------------|---|----------------------------|---------------------------|
| THE PILOT LIGHT WON'T STAY LIT | V | V | V | V | V | V | V |

4. Critical parts needed for further analysis.

Please collect and send at least 3 pieces of fault parts to VESTA for analysis if the following critical parts are replaced.

- a) The pilot
- b) Thermocouple
- c) The gas valve